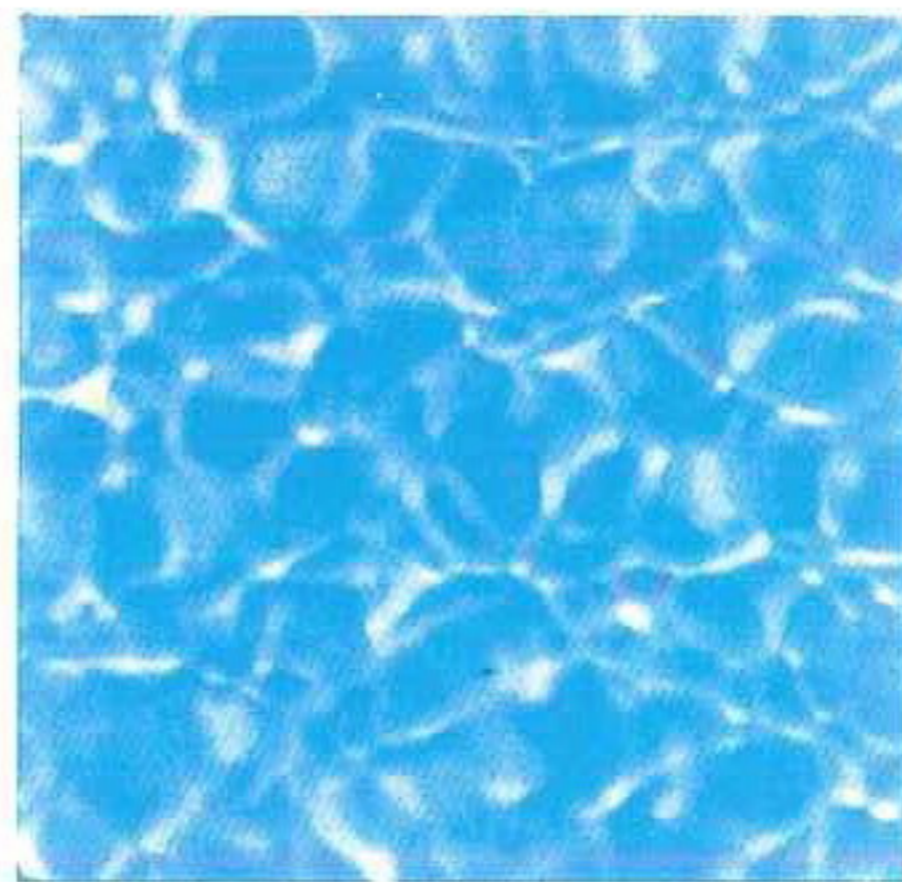


SUCCESS PUMP

SINCE 1959

GENERAL SERIES CATALOG

綜合系列產品



CS[®] 正字標記產品
ISO9001認證合格工廠

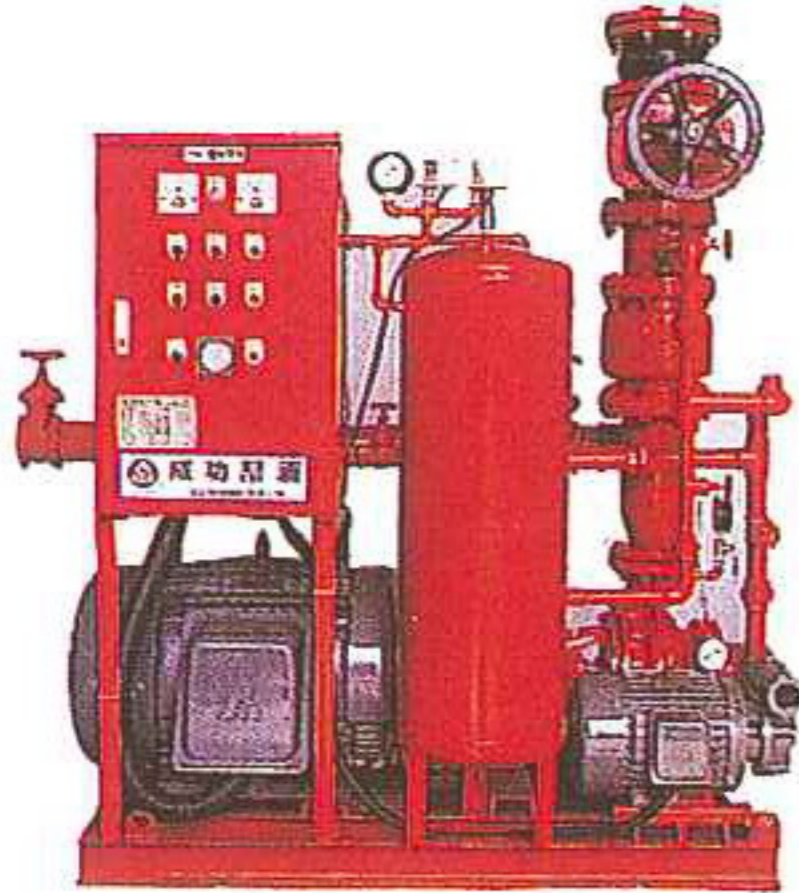


成功幫浦

型式僅供參考如有變更不另行通知
1997-9 2003-5
2000-7



FB



MICP



SDP

消防幫浦系列 FIRE PUMP SERIES

特點：

- 成功FBHP型自動加壓消防幫浦，主幫浦採用ISO2858國際標準規格聯軸式，多段式，雙吸式幫浦。
- 壓力強、性能高、效率優異。
- 採用整體化組合，將幫浦控制配電箱，壓力容器等相關器材組合，不需再做額外配備，節省施工費用。
- 機種齊全，符合國家消防法規要求及通過消防署審核認可。

用途：

- 附高感度控制配電箱，可加裝自檢系統，配合智慧型大樓電腦連線3A或5A系統，非常適合高層大樓使用。
- 適用一般消防泵、撒水泵、泡沫泵、採水泵等。

FEATURES:

- Success FBHP automatic pressure increase hydrant pump. The main pump uses ISO2858, internationally standard dimensions shaft, multi-section, double suction pump. Intense pressure, outstanding ability.
- Uses a one body combination, combines the battery, pressure compartment, and related parts, not needing to purchase foreign accessories; saving assembling fees.
- Well Stocked: In compliance to the national requests of the fire safety laws, and has approval and is recognized by the National Fire Department.

PURPOSE:

- Comes with a highly sensitive control electrical box, it is possible to add a self auditing system; in compliance to computerized buildings' computer network, 3A or 5A systems, very suitable for the uses of tall buildings.
- Compliance use to normal fire hydrants, sprinklers, form hydrants, and water pumps, etc.

供水加壓系列 BOOSTING PUMPS

揚程：130M 水量：12 m³/min

特點：

- 可採變頻器控制系統，達到恆壓要求，無水、無用水可停車，可漏水檢出，無水鎖，緩啟動緩停止。(BOOSTER PUMP)
- 用一般M.S.控制系統(差壓式)。
- 可單獨、交互、並列運轉。

用途：

三溫暖、高球會館、淋浴系統、學校生飲系統、工廠給水、純水加壓系統、鍋爐熱水迴水系統、市場、公園、海邊休閒中心、摩天大樓、飯店、醫院、宮殿式建築、社區加壓站、捷運車站、地下街

HEAD: 130M CAPACITY: 12 m³/min

FEATURES:

- could be use inverter control frequency system. For constant pressure if no water it will be automatic stop and senses water leak also no water hammer, start buffer, stop buffer.
- use M.S. control system (pressure on-off).
- Capable of single, corresponding, and synchronized operation.

PURPOSE:

Saunas, golf club houses, shower system, school drinking fountains, factory water supplies, pure water pressure systems, hot water re-coil systems, markets, parks, sea side recreation centers, sky scrapers, hotels, hospitals, castle like buildings, compound pressure station, train stations, M.R.T underground malls.

臥式端吸幫浦 END SUCTION PUMPS

揚程：210M(60HZ)

水量：18m³/min

特點：

- 泵浦的心臟為機械軸封
- 對付高粘度液體及其腐蝕性
- 導流螺帽之設計
- 亦可配合用戶作自動控制。
- 純化工機械軸封內裝式設計
- 平衡與全密閉式的葉輪設計
- 軸承架的浸油設計

用途：

- 農業灌溉用
- 工業用
- 熱水供應用
- 自來水輸送及加壓用
- 化學工廠用

HEAD: 210M(60HZ)

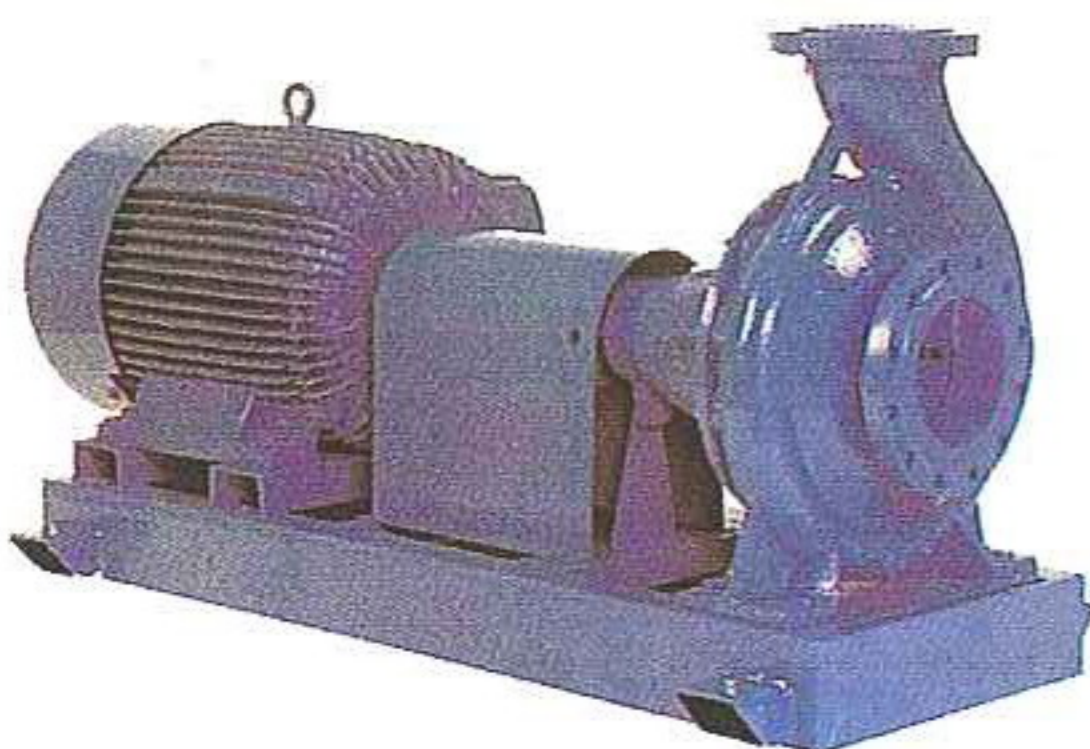
CAPACITY: 18m³/min

FEATURES:

- The heart of the pump is composed of a mechanical shaft seal.
- Fully chemical mechanical engineering internal shaft seal design.
- Capable of handling high viscosity materials, and or corrosive material.
- Balanced and a fully sealed leaves.
- Current guiding design of the screws and nuts.
- Grease intrusion design of the shaft stand.
- Capable of corresponding to the user's automatic controls.

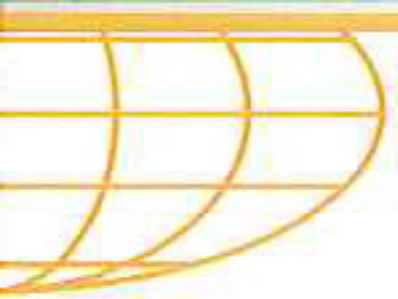
PURPOSE:

- Agriculture farming use
- Water transportation and pressure increase uses
- Industrial uses
- Chemical factory uses
- Hot water supplies



成功幫浦

SUCCESS PUMP



直結臥式端吸幫浦 MOTOR PUMPS

揚程：60M(60HZ) 水量：1.8m³/min
揚程：50M(60HZ) 水量：12m³/min

特點：

- 同軸連結式為馬達與水泵連結一體，構造簡單輕便，節省面積，強力高性能離心泵。
- 採用特殊軸封、耐用而半永久性，絕不漏水。
- 效率優異，節省馬力，有效節約能源。
- 備化工型、高吸入、高揚程、耐高溫泵浦。
- 歡迎訂製各種特殊規格泵浦、敝廠為您精心設計開發。

用途：

- 辦公大廈、公寓大廈之衛生及一般冷暖給排水用。
- 冷暖氣機之冷卻水及冷暖水循環用。
- 水處理、淨水、化學用水、冷暖交換，加壓裝置及凝結水回收等工業用。

HEAD:60M(HZ) CAPACITY:1.8m³/min
HEAD:50M(60HZ) CAPACITY:12m³/min

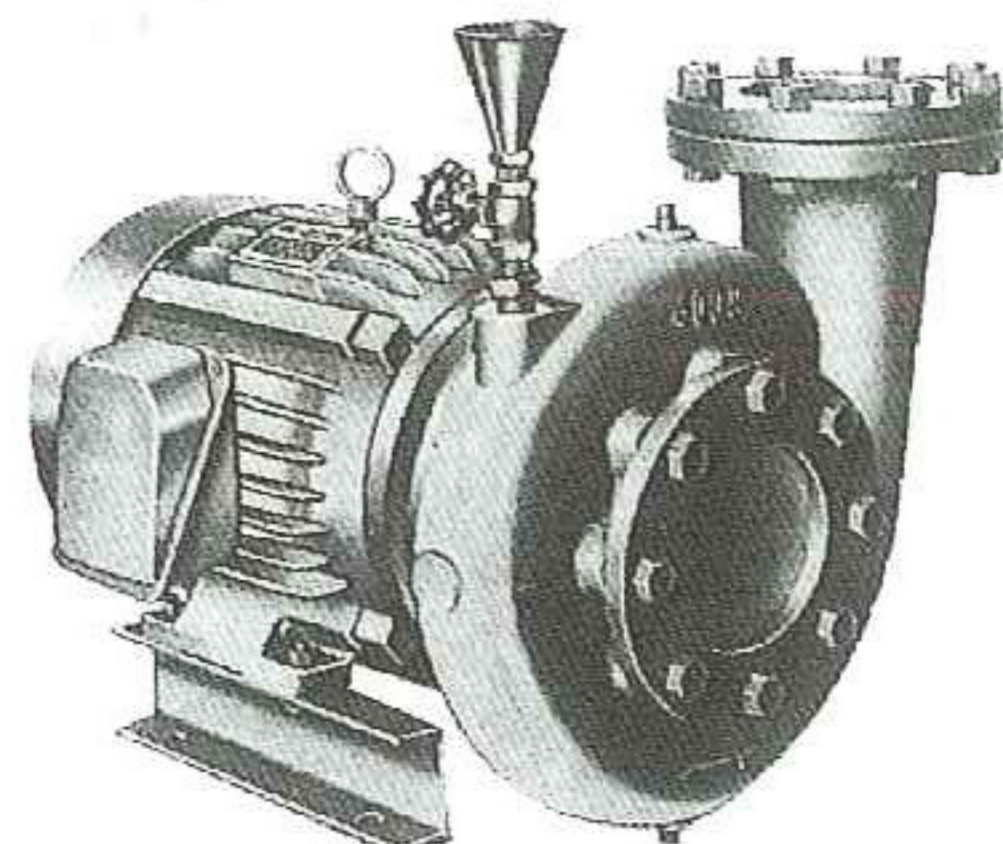
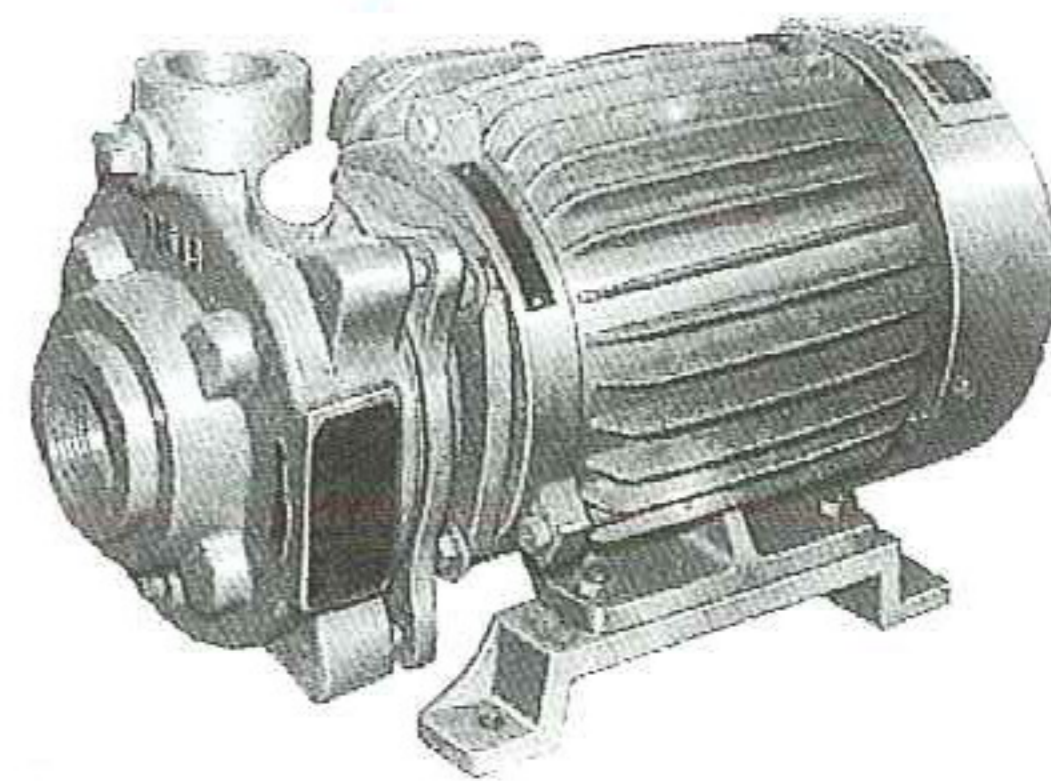
FEATURES:

- The motor and the pump is structured into one body using the same shaft; simple structure, saves space.
- Uses a special shaft seal, good for long term use, never leak.
- Excellent performance, saves power, and saves the use of electricity.
- Chemical engineering type, high suction, long distance, resistant against high heat.
- You are welcomed to order any special dimensioned pumps, our factory will help you to research and design according to your needs.

PURPOSE:

- Business buildings, high rises plumbing needs.
- Cold, warm water circulation of heaters and air-conditioners.
- Water processing, water cleaning, chemical use, exchanging of cold and hot, pressure increase, and water recycling uses.

GA,GB



沉水式清水系列 (1) SUBMERSIBLE SERIES

揚程：220M(60HZ) 水量4.0m³/min

特點：

- 馬達構造採用水潤滑密封式設計，免除安裝前灌水的困擾。
- 馬達軸承採用水潤滑專用高級錫合金銅，耐磨性特高，使用壽命長。
- 抽水機之葉輪皆經精密平衡校正，絕無振動現象發生，運轉順暢，寧靜無噪音。
- 效率高，馬力足無需例行保養。而且用電最省。
- 專用技術生產製造，提供您最佳的品質保證。
- 多樣化規格，提供您最經濟的選用。

用途：

高樓給水、噴水池、工廠、農漁業等清水之供給。

HEAD:220M(60HZ) CAPACITY:4.0m³/min

FEATURES:

- The motor structure uses a sealed water lubrication design, avoiding inconvenient filling off water before use.
- The motor shaft uses a special water lubrication high class alloy(tin and copper). high rubbing erosion tolerance, long life span.
- The water pump's leaves have been accurately balanced and collaborated. there are no possibility for vibrations to form, smooth operation, free of noise.
- High efficiency, outstanding power, no need for extra maintenance, and it is also very electricity economic.
- Manufactured from professional production, providing you with the best quality assurance.
- Multi-dimensions, providing you with economic selections.

PURPOSE:

High level water supply, water fountains, factories, fishery, etc., clean water supplies.

TN,TK



沉水式污廢水系列 (2) SUBMERSIBLE SERIES

揚程：45M(60HZ) 水量：8.0M³/MIN

特點：

- 葉輪獨特設計、效率高、適合各類污物排放，絕不阻塞(Non-Clog)。
- 軸封特殊構造，耐磨耗，保護馬達不受污水浸透。
- 泵浦表面經特殊處理、不易腐蝕、使用壽命長。
- 整體構造簡單、體積小、無振動噪音之困擾。
- 品質嚴格、性能優異，且零件備品具互換性、保養、維修容易。

用途：

- 土木建築工程用 ■ 一般家庭、學校、大樓之化糞池、淨水槽排水
- 醫院、衛生所(站)、中西餐廳、飲食店、以及廚房之污水排放。
- 地下道、礦坑之雨水抽送。 ■ 衛生下水道，廢水處理廠之污泥排送。
- 產業化工廠，食品加工廠之污(廢)水排放。
- 家畜(禽)養殖場、動物園之動物排洩物排送。
- 其他含有固狀物、雜物等流體抽送。

HEAD:45M(60HZ) CAPACITY:4.0m³/min

FEATURES:

- Special fan leaf design, high efficiency, compatible for any kind of waste water pumping and or transportation with no clogging problems.
- Shaft seal is specially structured, erosion resistant, protects the motor, not letting water to intrude.
- Surface of the pump has been specially treated, can not be easily eroded, long life span.
- A simple body structure, small body, no disturbance from noise caused from vibrations.
- Strict quality control, excellent performance, easy maintenance.

PURPOSE:

- Civil construction uses.
- Normal family, school, buildings, sewage, and water drainage use.
- Hospital, clinics, restaurants, fast food chains, and kitchen drainage uses.
- Underground sewers, mines' rain water pumping, transportation.
- Underground drainage, pumping and transportation of waste in waste water processing plants.
- Chemical factories, food factories' waste pumping and transporting.
- Waste pumping and or transportation of farms and zoos.
- Pumping and or transporting of other solids, and waste.

SP,SPW





TL



底吸型沈水式電動抽水機 LOW SUCTION VERTICAL TURINE SUBMERSIBLE SERIES

- 特點：**
- 直立式，由底部吸入，可增加水池水量使用率。
 - 泵浦與馬達整體軸心設計，使用壽命長效率高。
 - 可採用高電壓馬達，特殊絕緣設計。
 - 葉輪經靜動平衡校正，及雙重力軸承盤設計，運轉平順無噪音。
 - 單段或多段，密閉式葉輪。
 - 溫度：40°C以下乾淨水。
 - 揚程：可選擇。
 - 水量：~ 180 m³/min。
 - 用途：自來水供水用。大樓給水用。排水用。冷卻水用。工業製程用。

- FEATURES：**
- Vertical and low suction. No cavitation, increase pool water use rate.
 - Pump and motor one set shaft high Efficiency, long life.
 - High voltage motor, good insulation design.
 - Impeller balance, double supporting plate for thrust design.
 - Single or multis stages, close type impeller.
 - Temperature: to 104°F
 - HEAD: optional
 - CAPACITY: to 47520 GPM.
 - PURPOSE: water supply plant. Building water plant. Land drainage. Control cooling water. Industrial process.

SCV



豎軸離心斜流(混流)幫浦 VERTICAL CENTRIFUGAL MIXED-FLOW PUMPS

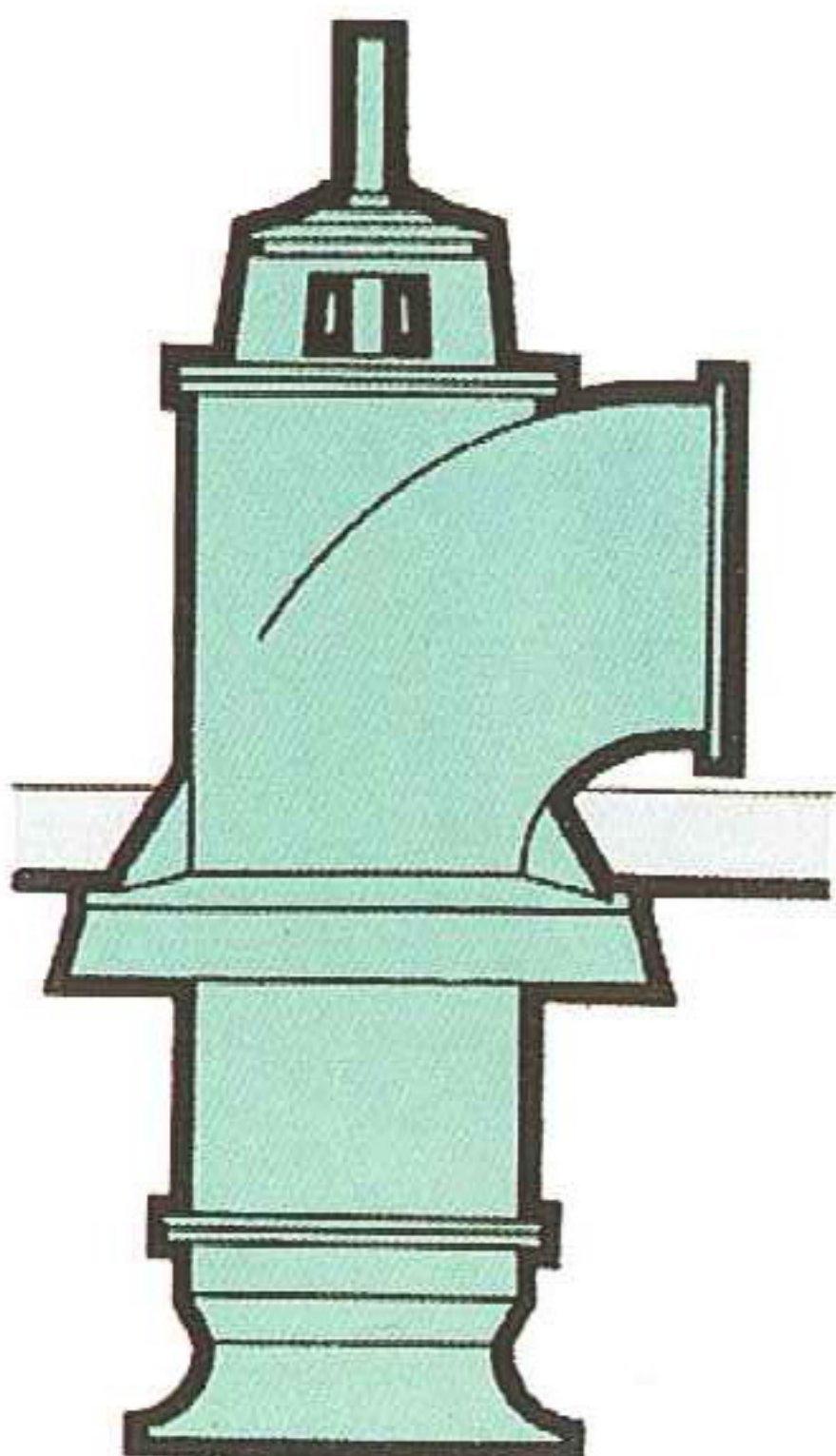
- 單段或多段、底部吸入，密閉式或開放式葉輪
- 水量：~ 600M³/MIN
- 揚程：可以選擇
- 特點：不受吸上高度限制。揚程高。所佔空間小。馬達維護較沈水式簡單容易。

- 用途：排水用。灌溉用。防洪用。冷卻水用。工業製程用。
- Single or multis stages, bottom suction, close or open impeller
- CAPACITY: to 160000 gpm
- HEAD: optional

- FEATURES:**
- no suction lift limitation, high head ability, smaller installation space. motor maintenance more simple and easy than submerged pump.

- PURPOSE:**
- land drainage, irrigation and flood control cooling water, industrial process

VCP



豎軸離心軸流幫浦 VERTICAL CENTRIFUGAL AXIAL FLOW PUMPS

- 單段、底部吸入、螺旋槳式葉輪
- 水量：1080M³/MIN
- 揚程：可以選擇（低揚程用）
- 特點：用於高水量低揚程之抽送。所佔空間小。
- 用途：排水用。防洪用。灌溉用。

- Single stage, bottom suction, propeller impeller.
- CAPACITY: TO 160000 GPM
- HEAD: optional (low head)

- FEATURES:**
- suitable for pumping large capacity and low head service. small installation space.

- PURPOSE:**
- land drainage, irrigation and flood control.

豎軸深井式多段離心透平幫浦

VERTICAL DEEP WELL MULTIS TAGE CENTRIFUGAL TURBINE PUMPS

水量：~30m³/min(60HZ)
~25m³/min(50HZ)

揚程：~195m(60HZ)
~135m(50HZ)

- 特點：不受吸上高度限制。揚程高。所佔空間小。馬達維護較沈水式簡單容易。
- 用途：深井灌溉用。加壓用。工廠給水用。原水抽送用。消防用。空調水循環用。海水之抽送。
- CAPACITY: to 7900gpm(60HZ)
to 6600gpm(50HZ)
- HEAD: to 640ft(60HZ)
to 444ft(50HZ)

Features:

- no suction lift limitation. high head ability. smaller installation space. motor maintenance more simple and easy than submerged pump.

PURPOSE:

- deep-well irrigation. intake of seawater. airconditioning circulation. process service. fire-fighting. water-feed.

豎軸離心渦卷污水幫浦

VERTICAL CENTRIFUGAL VOLUTE SLURRY PUMPS

- 單段、底部吸入、開放式葉輪

■水量：~12m³/min(60HZ)
~10m³/min(50HZ)

■揚程：~46M(60HZ)
~32M(50HZ)

■溫度：~150℃

- 特點：將傳動軸保護管與出水管分開成兩支管，適於抽送廢水。豎軸設計，不佔空間。

- 用途：污水清水或黏性(SLURRY)液之抽送。腐蝕性溶液之抽送。高溫溶液之抽送。危險液易燃液或毒氣性液之抽送。

- Single stage, bottom suction, open impeller.

■CAPACITY: to 3170gpm(60HZ)
to 2640gpm(50HZ)

■HEAD: to 150ft(60HZ)
to 104ft(50HZ)

■TEMPERATURE: to 300°F

FEATURES:

- transmission shaft protecting pipe and discharge pipe is independent, suitable for pumping wastewater. vertical shaft desing, smaller installation space.

PURPOSE:

- slurries or cleat liquids. corrosive liquids. extreme temperature liquids. hazardous, inflammable, and toxic liquids.

橫軸離心渦卷雙吸幫浦

HORIZONTAL CENTRIFUGAL VOLUTE DOUBLE SUCTION PUMPS

- 單段、雙吸、密閉式葉輪

■水量：~2.5~265m³/min(60HZ)
~2~220m³/min(50HZ)

■揚程：~275M(60HZ)
~190M(50HZ)

- 特點：水平割裂，保養容易。NPSHR 值較單吸式小。雙吸式葉輪，故軸向推力左右相互抵消。

- 用途：製程用。紙漿及造紙用。工業用。都市給水用。公共給水用。船舶用。

- Single stage, double suction, close impeller

■CAPACITY: to 70,000gpm(60HZ)
to 58,000gpm(50HZ)

■HEAD: to 900 ft(60HZ)
to 600 ft(50HZ)

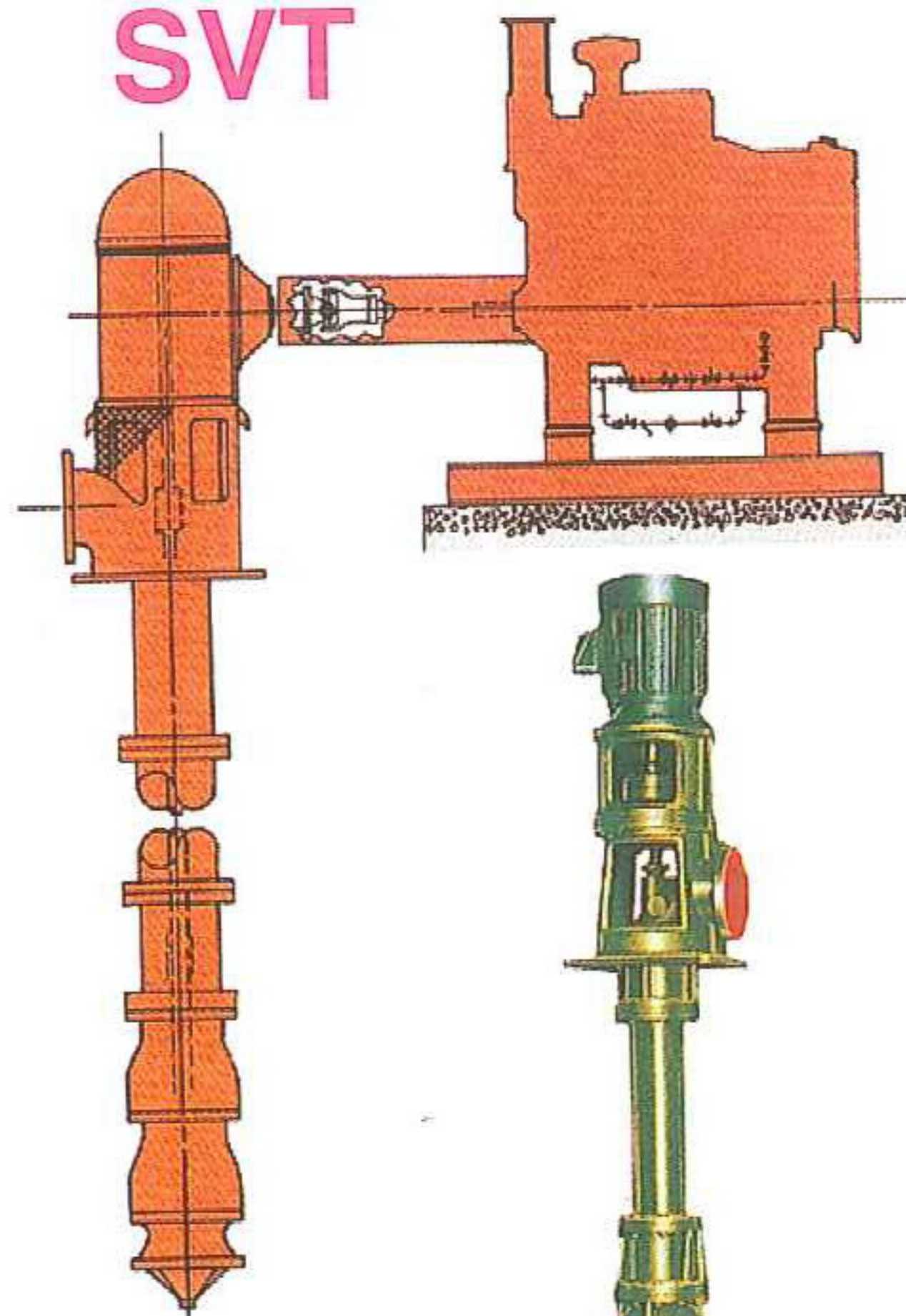
FEATURES:

- horizontal, axial split, easy maintenance, less npshr than single suction pump. double suction impeller, counterbalance axial thrust in both direction.

PURPOSE:

- process, pulp & paper, primary metals, municipal, utilities, marine.

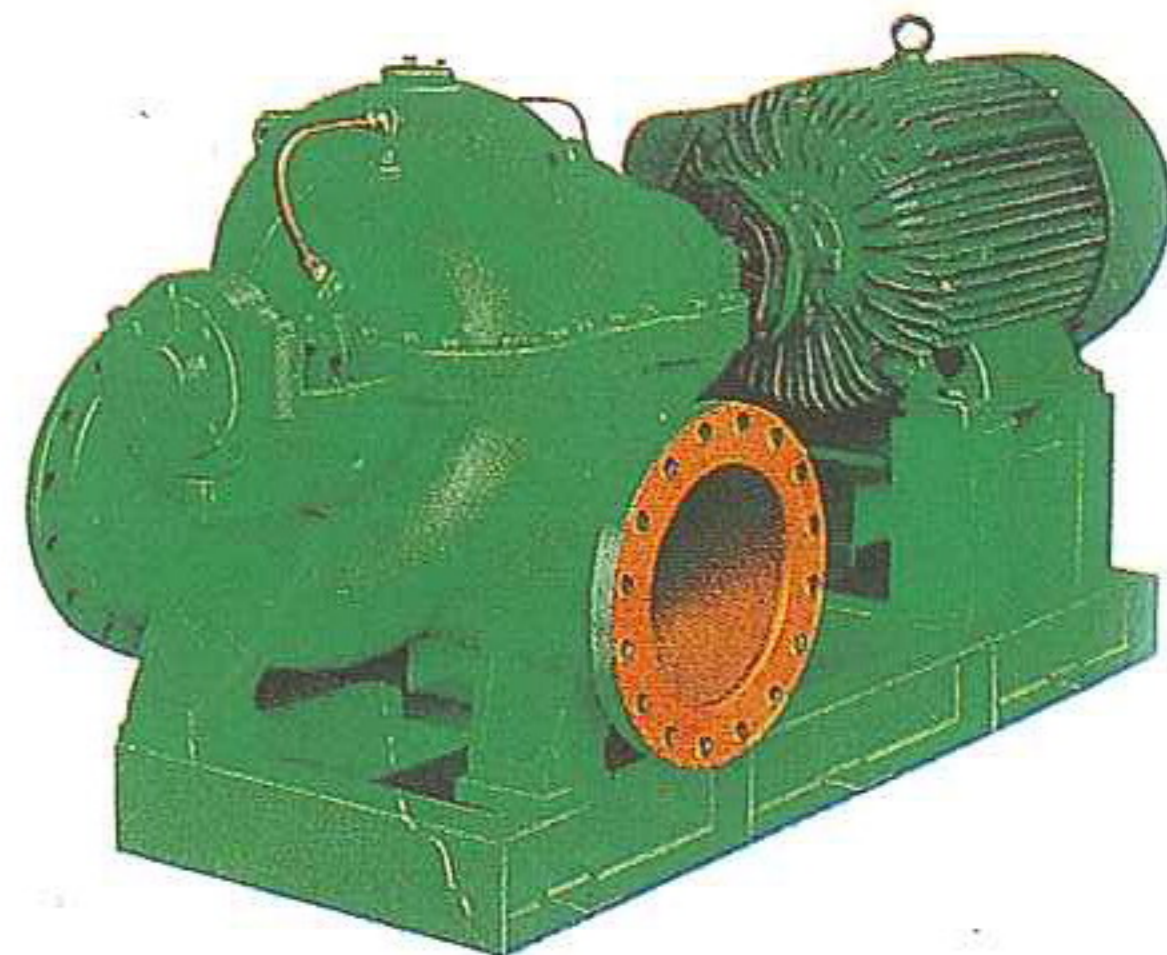
SVT



SHV



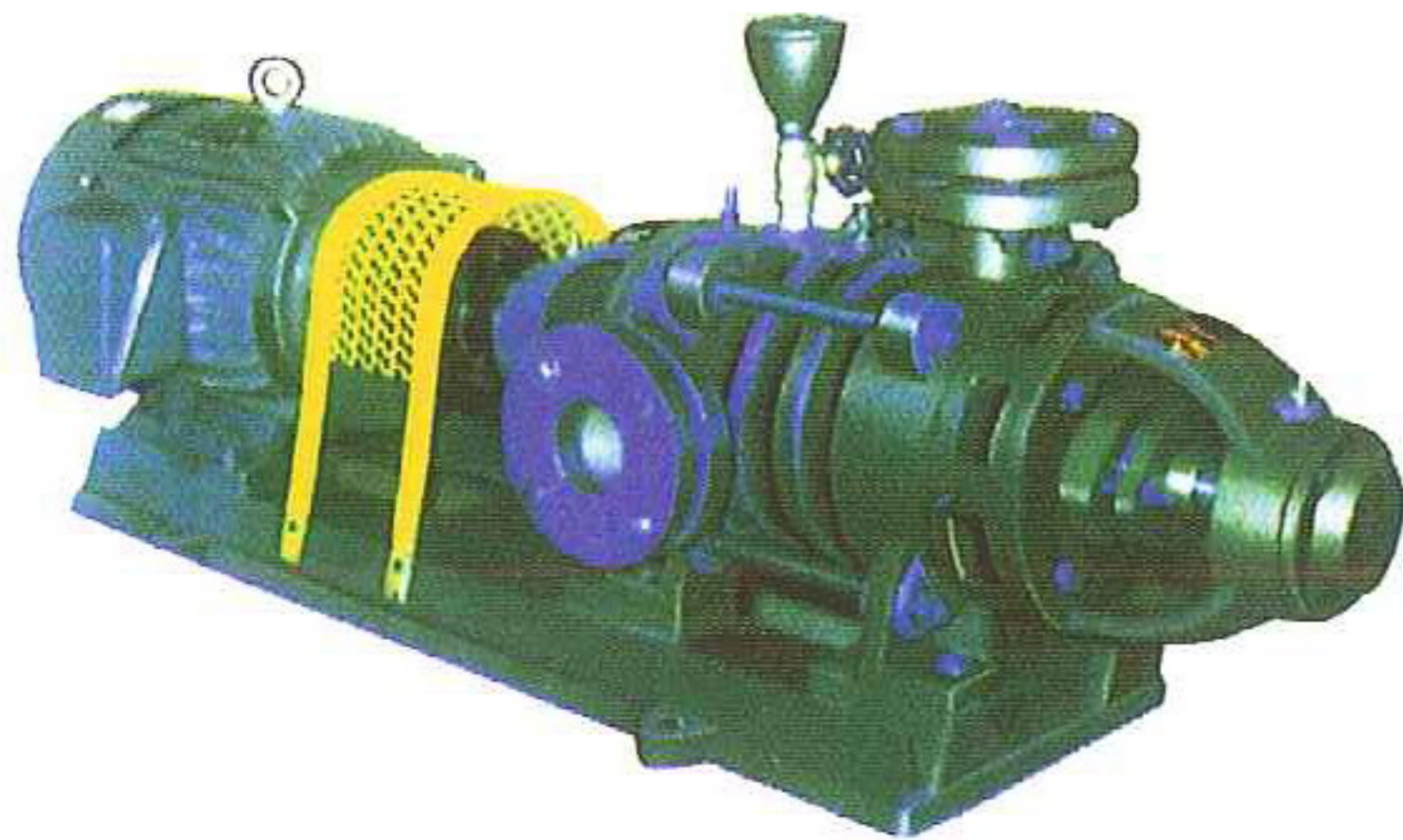
SDM





SWL

橫軸離心透平幫浦

HORIZONTAL CENTRIFUGAL
TURBINE PUMPS

- 多段，側吸，出口向上，密閉式葉輪
- 水量：0.03~0.95m³/min(60HZ)
0.025~0.8m³/min(50HZ)
- 揚程：~320M(60HZ)
~220M(50HZ)
- 溫度：140 °C
- 特點：低水量、高揚程鍋爐給水用。
- 用途：鍋爐給水。高樓給水。坑道排水。自來水用。土木工程用。
- Multi-stages, side suction, top discharge, close impeller
- Capacity: 8~250GPM(60HZ)
6.6~210GPM(50HZ)
- Head: to 1050 ft(60HZ)
to 720 ft(50HZ)
- Temperature: to 284 °C

FEATURES:

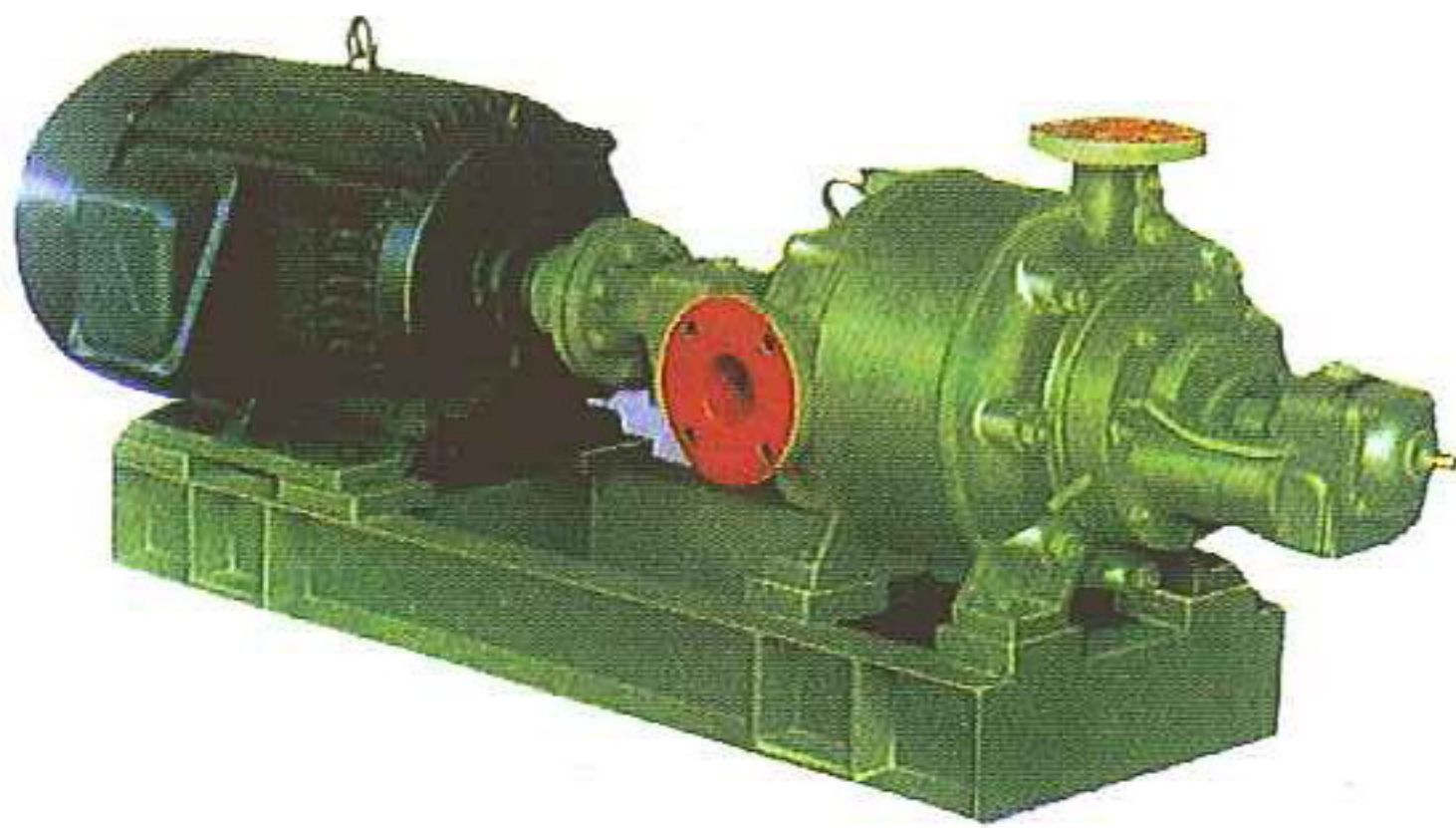
- for small capacity and high head boiler feed water service.

PUKPOSE:

- boiler feed. building water supply.
drainage system. water supply plant. civil engineer.

SWD

橫軸離心透平幫浦

HORIZONTAL CENTRIFUGAL
TURBINE PUMPS

- 多段、側吸、出口向上、密閉式葉輪
- 水量：0.1~8m³/min(60HZ)
0.1~6.7m³/min(50HZ)
- 揚程：~500M(60HZ)
~350M(50HZ)
- 溫度：~150 °C
- 特點：高揚程鍋爐給水用。耐高溫。重力型設計。
- 用途：鍋爐給水。自來水用。灌溉用。坑道排水用。高樓給水用。土木工程用
- Multi-stages, side suction, top discharge, close impeller
- Capacity: 25~2110gpm(60HZ)
25~1770gpm(50HZ)
- Head: to 1640 ft(60HZ)
to 1150 ft(50HZ)
- Temperature: to 302 °C

FEATURES:

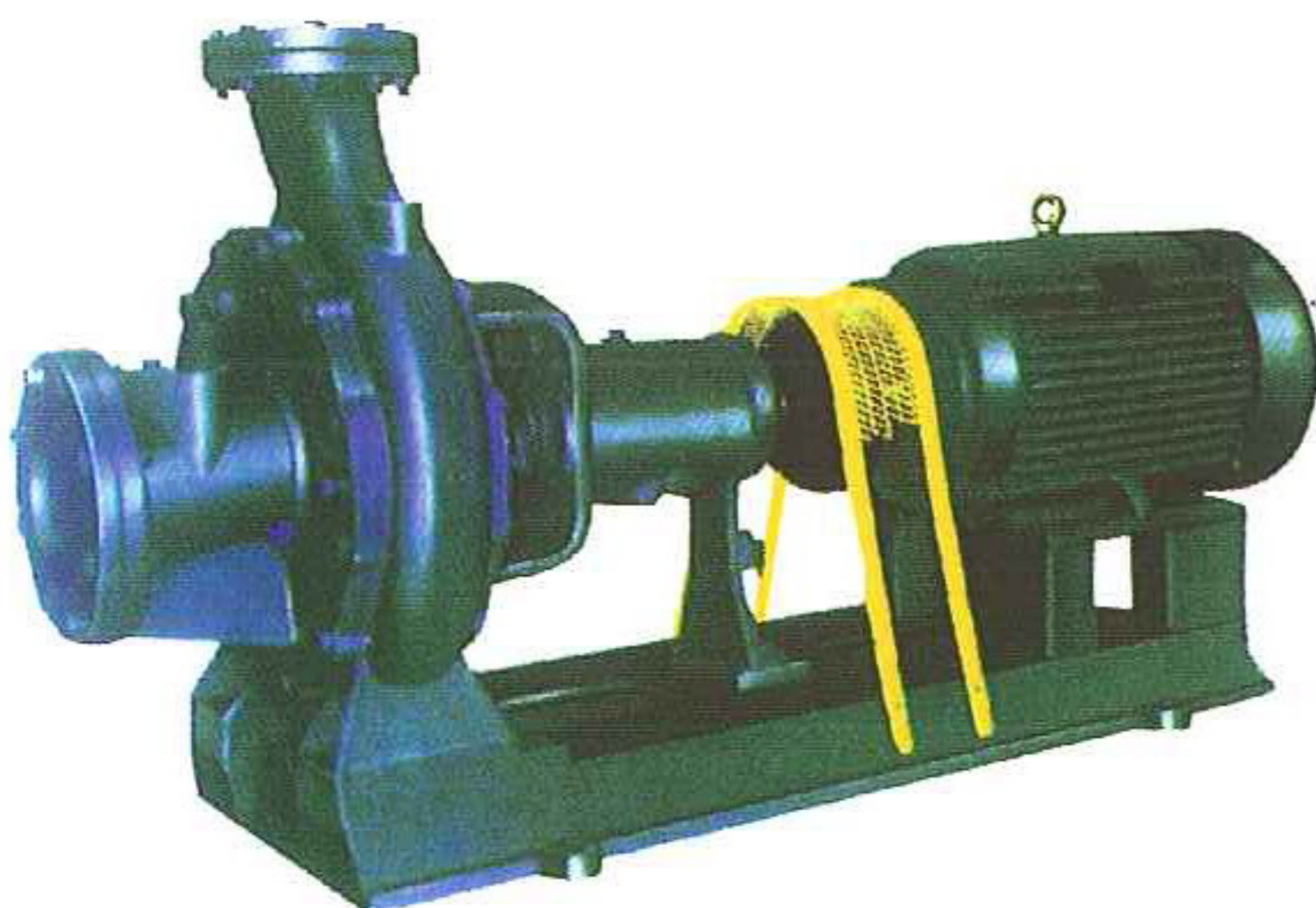
- for high head boiler feed water service. high temperature resistance. heavy duty design.

PUKPOSE:

- Boiler feed. civil engineering. agricultural irrigation. drainage system. building water supply.

SLP

橫軸離心渦卷幫浦

HORIZONTAL CENTRIFUGAL
VOLUTE PUMPS

- 單段、端吸、開放式葉輪
- 水量：~17m³/min(60HZ)
~14m³/min(50HZ)
- 揚程：~100M(60HZ)
~69M(50HZ)
- 溫度：~140 °C
- 特點：適於抽送廢水及3%(含)以下之紙漿。
- 用途：製紙工業：黑液、綠液之抽送。化學工業：高黏度液之抽送：下水道污泥，污水之抽送。礦液：泥漿、礦漿之抽送。食品工業：糖精、釀造業。
- Single stage, end suction, open impeller
- Capacity: to 4500 gpm(60HZ)
to 3750 gpm(50HZ)
- Head: to 328 ft(60HZ)
to 227 ft(50HZ)
- Temperature: to 284 °F

FEATURES:

- suitable for pumping waste water and paper stock up to 3% concentration.

PUKPOSE:

- pulp and paper industries. chemical industries. sewage system mining industries. food industries. civil engineering.

成

功

幫

浦

SUCCESS PUMP