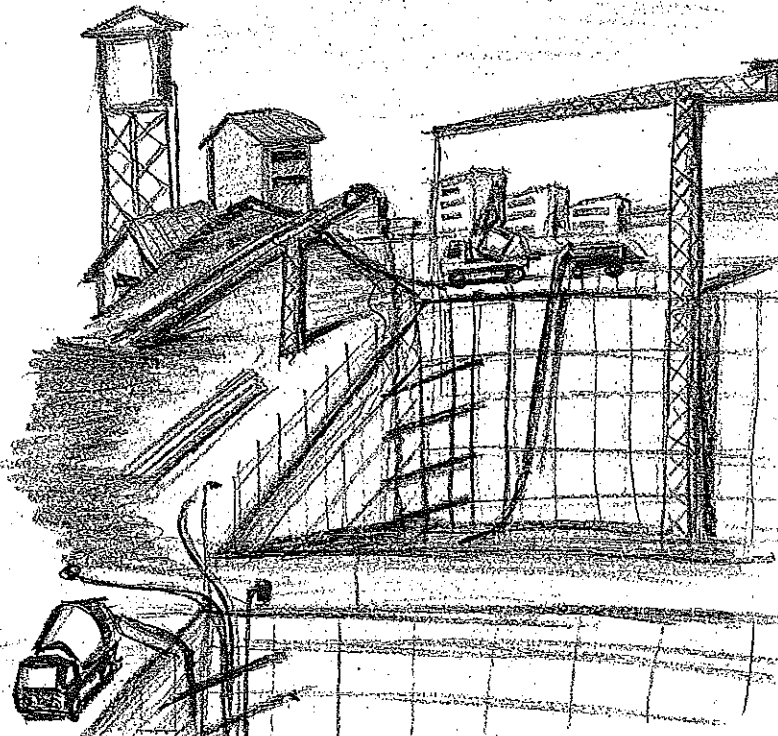
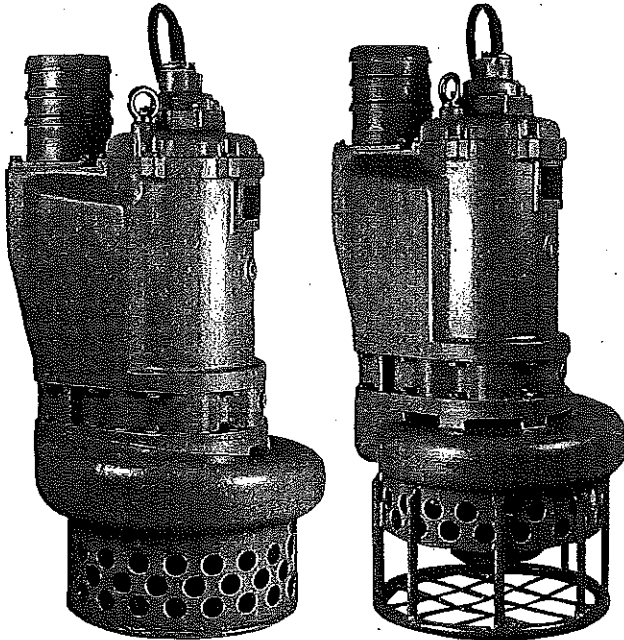


SUCCESS PUMP

SINCE 1959

ISO 9002

SI/SIN



SAND/SLUDGE/SLURRY PUMPS

FEATURES

- A. HEAVY DUTY-CONSTRUCTION
- B. TOP DISCHARGE
- C. WATER JACKET WITH AXIAL FLOW COOLING.
- D. DOUBLE MECHANICAL SEAL
- E. BUILT IN AGITATOR, SPECIALLY DESIGNED TO CREATE AN INHERENT MIXING ACTION AT THE PUMP INLET CAUSING THE SOLIDS TO MOVE INTO SUSPENSION AND KEEPING THE IMPELLER AND FLOW CHAMBER CLEAR AND UNCLOGGED.
- F. HEAVY DUTY WEAR RESISTANT IMPELLER AND AGITATOR.

SI/SUBMERSIBLE SAND PUMPS

APPLICATIONS

GROUND AND NUISANCE WATER REMOVAL DRAINAGE FROM DAMS, SEWER SYSTEMS, TUNNELS, RIVER IMPROVEMENT PROJECTS, CONSTRUCTION SITES.

SIN/SLUDGE/SLURRY PUMPS

APPLICATIONS

MUDDY LIQUID GENERATED FROM-CIVIL ENGINEERING PROJECTS AND ARCHITECTURAL WORKS. ALSO SUITABLE FOR AGRICULTURAL WASTE PROJECTS.

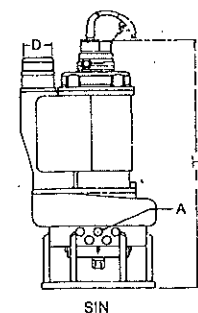
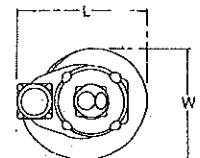
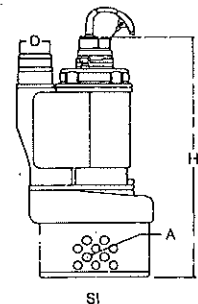
Specifications

Pump	Output H.P.	Discharge (inch)	Voltage 50Hz or 60Hz	Continuous		Maximum		Solid (mm)
				Head m	Capacity L/min	Head m	Capacity L/min	
SUC37SI	5	3"	3 phase 220V 460V	12	500	14	1700	20
SUC55SI-H	7.5	3"		20	550	24	1700	25
SUC55SI	7.5	4"		10	1300	17	2400	25
SUC75SI	10	4"		15	1600	19	3000	25
SUC110SI-H	15	4"		24	1000	29	2500	30
SUC110SI	15	6"		15	2000	21	4200	30

Pump	Output H.P.	Discharge (inch)	Voltage 50Hz or 60Hz	Continuous		Maximum		Solid (mm)
				Head m	Capacity L/min	Head m	Capacity L/min	
SUC37SIN	5	3"	3 phase 220V 460V	10	950	14	1500	22
SUC55SIN	7.5	4"		12	1000	16	1900	25
SUC75SIN	10	4"		15	1000	17.5	3000	35
SUC110SIN	15	6"		13	2000	20	4200	35

Dimensions

TYPE	A	D	L	W	H	(kg)
SUC37SI	20	3"	420	410	790	110
SUC55SI	25	3"-4"	420	410	790	120
SUC75SI	25	4"	420	410	820	130
SUC110SI	30	6"	565	560	950	240
SUC37SIN	22	3"	420	410	820	110
SUC155SIN	25	3"-4"	420	410	820	120
SUC75SIN	35	4"	420	410	840	130
SUC110SIN	35	6"	570	560	1100	240



SUCCESS PUMP

SUBMERSIBLE PUMP. MULTIPURPOSE

Model SU & SUC series for various applications, for drainage slightly waste water for portable use or permanent installation equipped with level controller for automatic operation. (For instance SU-400A)

Suitable for the dewatering of cellars, garages, basins pools, ditches, pits, for water transfer, gardening, horticulture, civil engineering, agriculture purposes.

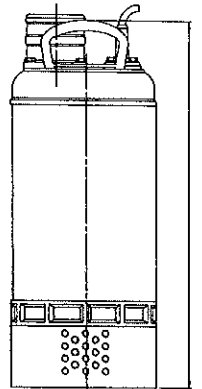
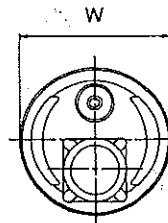
- Motor with built in overload protector.
- Shaft with heat treatment for long lasting continuous operation.
- Mechanical seals in oil chamber with extra external lip seal.
- Rugged & Durable construction Stainless Steel & Cast Iron.
- Potted Leads: Sealed with epoxy resin.
- Extra Service:
3 Function Selector Switch-for control of "MANUAL-OFF-AUTO" (For Instance SU-400MA)



ALL KINDS OF PUMP AVAILABLE WITH FLOAT AND CONTROL PANEL.

Pump Type	Outlet Diameter Inch (mm)	Output Watts	Voltage 1 Phase 50 or 60Hz	Continuous		Maximum		Cable $\phi \times \text{mm}^2 \times \text{m}$	Auto	Weight KG
				Head m.	Capacity L./min	Total Head m.	Max Capacity L./min			
SU-100	1" (25)	100	100V 240V 200V 240V	2	60	6	85	3 x 0.75 x 3.6	SU-100A	5
SU-150	1 1/4" (32)	150		4	80	7	130	3 x 0.75 x 3.6	SU-150A	5.5
SU-250	1 1/2" (40)	260		6	120	10	200	3 x 1 x 6	SU-250A	9
SU-400	2" (50)	400		8	130	12	240	3 x 1 x 6	SU-400A	10
SU-750	2" (50)	760		10	200	15.5	380	3 x 1.6 x 10	SU-750A	24
SU-1500H	2" (50)	1500		15	250	22	450	3 x 2.0 x 10	SU-1500HA	49
SU-1500	3" (80)	1500		8	500	17	700	3 x 2.0 x 10	SU-1500A	49
SU-2200H	2" (50)	2200		20	300	27	650	3 x 3.5 x 10	SU-2200HA	51
SU-2200	3" (80)	2200		10	600	21	860	3 x 3.5 x 10	SU-2200A	51
3 PHASE-RST SERIES:										
SUC-8	2" (50)	0.75 KW	50 or 60Hz 200V 480V	10	200	15.5	380	4 x 1.6 x 10	SUC-8A	21
SUC-15H	2" (50)	1.5KW		15	250	23	450	4 x 1.6 x 10	SUC-15HA	26
SUC-15	3" (80)	1.5KW		8	500	17	700	4 x 1.6 x 10	SUC-15A	26
SUC-22H	2" (50)	2.2KW		20	300	30	650	4 x 2.0 x 10	SUC-22HA	39
SUC-22	3" (80)	2.2KW		10	600	20	850	4 x 2.0 x 10	SUC-22A	39
SUC-37H	2" (50)	3.7KW		30	200	35	850	4 x 2.0 x 10	SUC-37HA	45
SUC-37	3" (80)	3.7KW		20	500	31	1050	4 x 2.0 x 10	SUC-37A	45
SUC-55H	3" (80)	5.5KW		25	600	32	1050	4 x 3.5 x 10	SUC-55HA	65
SUC-55	4" (100)	5.5KW		15	1000	22	1800	4 x 3.5 x 10	SUC-55A	65
SUC-75H	4" (100)	7.5KW		30	800	40	1600	4 x 5.5 x 10	SUC-75HA	75
SUC-75	6" (150)	7.5KW	15	1600	31	2200	4 x 5.5 x 10	SUC-75A	75	

- PST TYPE
- Dimensions



APPLICATION

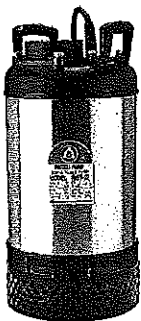
- NEW DESIGNED DOUBLE FRAME CASE FOR CIRCUMFERENTIAL FLOW SYSTEM ASSUREING SUPERIOR MOTOR COOLING EFFECT.
- HEAVY DUTY DESIGNED ELECTRIC MOTOR FOR CONTINUOUS USE. WITH THERMAL OVERLOAD PROTECTION AGAINST OVERHEATING.
- TOP DISCHARGE OUTLET.
- COIL FOR DRY TYPE MOTOR. CAN BE REWOUND WITHOUT REMOVAL OF STATOR FROM MOTOR FRAME.
- LONG LASTING DURABILITY FOR CONTINUOUS RUNNING.
- SHAFT WITH STAINLESS SLEEVE, PROTECT SHAFT LONG RUNNING WITHOUT DAMAGE.
- IMPELLER, MOTOR CASING, OUTER PUMP CASING, SHAFT, STRAINER, ALL BOLT AND SCREWS IN STAINLESS STEEL AISI 304. IMPELLER ALSO AVAILABLE IN HIGH CHROMIUM, HARD CASE IRON.
- DOUBLE MECHANICAL SEAL. (1 x SILICON + 1 x CARBON).
- AGRICULTURE IRRIGATION.
- TRANSFER OF SEAWATER.
- AQUATIC DISPLAYS WATERFALLS FOUNTAINS.
- BILGE PUMP FOR BOAT AND VESSELS.
- CONSTRUCTION YARD.
- SUITABLE FOR DRAINAGE LIGHTLY WASTE WATER ALSO FOR WATER INCLUDING ABRASIVE SOLIDS.

PST SERIES

PST22/PST37/PST55/PST75(2.2~7.5KW)

Specifications

Pump type	Output H.P.	Discharge (mm)	Voltage 50Hz or 60Hz	Continuous		Weight kg	Dimension(mm)	
				Head m	Capacity L/min		H	W
PST22H	3	2" 3/4"	3 phase 220-480V	20	300	50	530	250
PST22	3	3" 1/4"		15	410	60	530	250
PST37H	5	2" 3/4"		25	300	65	535	250
PST37	5	3" 1/4"		20	500	55	535	250
PST55H	7.5	3" 1/4"		25	680	70	600	250
PST55	7.5	4"		20	810	70	640	250
PST75H	10	4"		30	880	75	640	250



SUBMERSIBLE PUMP. MULTIPURPOSE "SN" SERIES

SERIES

Model Nos:

Based on the Vortex principle, the impeller is Real-non-clog design, and can carry waste and sewage waste directly through the impeller. Suited for heavily polluted waste water containing slender matter and fiber.

- 1) The built-in motor protector protects the motor from overload burn or phase loss.
- 2) A mechanical seal of super hard alloy used for shaft bearing sealing prevents water leakage into the motor.



Pump Type	Outlet Diameter Inch (mm)	Output Watts	Voltage 1 Phase 50 or 60Hz	Continuous		Maximum		Cable c x mm ² x m	Weight KG
				Head m.	Capacity L./min	Total Head m.	Max Capacity L./min		
SU150SN	1 1/4" (32)	150	100 240V	3	100	7	130	3 x 0.75 x 3.5	5.5
SU250SN	1 1/2" (40)	250		5	100	8	200	3 x 1.0 x 6	9
SU400SN	2" (50)	400		6	115	10	250	3 x 1.0 x 6	10
SU750SN	3" (80)	750		5	350	9	500	3 x 1.6 x 6	22
SU1500SN	3" (80)	1500	200V 240V	6	400	10	750	3 x 2.0 x 10	47
SU2200SN	3" (80)	2200		8	400	11	1000	3 x 3.5 x 10	49
3 PHASE - RST SERIES									
SUC8SN	3" (80)	0.75KW	200V 480V	5	350	9	550	4 x 1.6 x 6	21
SUC15SN	3" (80)	1.5KW		6	400	10	800	4 x 1.6 x 10	23
SUC22SN	3" (80)	2.2KW		7	500	11	1000	4 x 2 x 10	39
SUC37SN	3" (80)	3.7KW		8	700	13	1400	4 x 2.0 x 10	45

PST/PS

STAINLESS SERIES



APPLICATIONS:
 - RENTAL SERVICE
 - CONSTRUCTION YARDS
 - BILGE PUMP FOR BOATS AND VESSELS
 - CHEMICAL PLANTS
 - FOOD PLANTS
 - GARDEN POND CIRCULATION,
 - WATERFALLS, FOUNTAINS
 - AGRICULTURE IRRIGATION
 - TRANSFER OF SEAWATER AND LIQUID CHEMICALS (S.S AISI 316)

- * NEWDESIGNED DOUBLE FRAME CASE FOR CIRCUMFERENTIAL FLOW SYSTEM ASSURING SUPERIOR MOTOR COOLING EFFECT.
- * LONG LASTING DURABILITY FOR CONTINUOUS RUNNING
- * RUST PROOF. ACID RESISTANT. SUITABLE FOR SEA WATER. LIGHT CHEMICALS AND FOOD INDUSTRIES.
- * PORTABLE PUMP FOR VARIOUS USAGE
- * AVAILABLE WITH 1ST QUALITY FLOATSWITCH.

CONSTRUCTION & MATERIALS
 1. PUMP OUTER CASING: STAINLESS STEEL AISI 304*
 2. MOTOR HOUSING, SHAFT, ALL SCREWS AND BOLTS IN STAINLESS STEEL AISI 304
 3. MOTOR COVER, PUMP HOUSING AND IMPELLER IN CAST IRON*
 4. DOUBLE MECHANICAL SEAL IN STANDARD (CARBON-CERAMIC) SPECIAL MATERIALS AVAILABLE ON REQUEST.
 5. MOTOR: HEAVY DUTY DESIGNED ELECTRIC MOTOR FOR CONTINUOUS USE, WITH THERMAL OVERLOAD PROTECTION.
 * ALSO AVAILABLE IN AISI 316

PUMP TYPE	OUTLET DIAMETER INCH (mm)	OUTPUT WATTS	VOLTAGE 1 PHASE 50 OR 60HZ	CONTINUOUS		MAXIMUM		CABLE c x mm x m	Weight KG
				HEAD m.	CAPACITY L./min	TOTAL HEAD m.	MAX CAPACITY L./min		
PS750	2" (50)	750	100-240	10	200	15.5	380	3 X 1.6 X 6	25
3 PHASE-RST SERIES:									
PST.8	2" (50)	0.75KW	200-440	10	200	15.5	380	4 X 1.6 X 6	24
PST.15	2" (50)	1.5KW	200-440	15	240	23	500	4 X 1.6 X 10	26

SUBMERSIBLE SEWAGE PUMP "N"

SERIES

SEWAGE SHREDDER PUMP "NK"

SERIES

1. Model Nos: "N"

The Single vane Non-clog impeller is specially suited to carry off sewage and waste water.

Designed to have free passage of 80% of discharge diameter

2. Model Nos: "NK"

Sewage shredder pumps, impeller with cutter & grinding plate.

Applications:

1. Sewage in tannery and farm.
2. Sewage light slurry and factory waste.
3. Sludge carry off in water treatment.
4. All sanitary applications, sewage and waste water dutys.

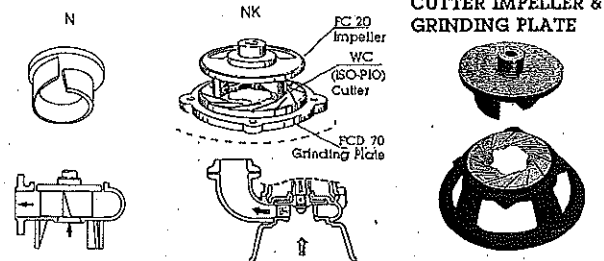
Material & Construction:

- Motor housing, suction cover & all screws: Stainless Steel 304.
- Motor upper cover & Pump Housing: Cast Iron, treated to be corrosion resistant.
- Shaft: Stainless Steel with heat treatment for long continuous running with double mechanical seal in oil chamber.
- Motor with built in overload protector.



ALL KINDS OF PUMP AVAILABLE

WITH FLOAT AND CONTROL PANEL.



Pump Type	Outlet Diameter Inch (mm)	Output Watts	Voltage 1 Phase 50 or 60Hz	Continuous		Maximum		Cable c x mm ² x m	Weight KG
				Head m.	Capacity L./min	Total Head m.	Max Capacity L./min		
SU-750N, SU750NK	2"(50)	750	110-240V	8	250	13	450	3 x 1.6 x 10	27
SU-1500N, SU-1500NK	3"(80)	1500	200V	8	500	16	800	3 x 2.0 x 10	51
SU-2200N, SU-2200NK	3"(80)	2200	240V	10	550	19	900	3 x 3.5 x 10	55
3 PHASE-RST SERIES									
SUC-8N, SUC-8NK	2"(60)	0.75 KW	50 or 60Hz 220 480V	6	250	13	450	4 x 1 x 10	27
SUC-15N, SUC-15NK	3"(80)	1.5KW		8	500	16	800	4 x 1.6 x 10	30
SUC-22N, SUC-22NK	3"(80)	2.2KW		10	550	19	900	4 x 2 x 10	49
SUC-37N, SUC-37NK	4"(100)	3.7KW		11	750	21	1300	4 x 2.0 x 10	60
SUC-55N, SUC-55NK	4"(100)	5.5KW		12	1000	18	2200	4 x 3.6 x 10	70
SUC-75N, SUC-75NK	4"(100)	7.5KW		15	1100	23	2600	4 x 5.5 x 10	80

- Due to our policy of constant research and developments, product spe may change without notice.
- Pumps of any special specifications will be made through our special d
- Models & specification reference use.



(圖及尺寸僅供參考)

日義科技有限公司
台北縣新莊市新樹路 52-21 號

電話:02-2208-5268

傳真:02-2208-3758-9